



Single operation, snap action thermal protectors perform like thermal fuse with the reliability of 100% testing.

# MODEL H SERIES

The PEPI® Model H thermal protectors break the circuit when temperatures reach a preset high limit. Since they cannot be reset they resemble thermal fuses in operation, however, unlike thermal fuses, they can be tested to ensure reliability. Models have different case styles to improve operation in particular applications by speeding reaction times.



Same side or opposite end terminations



Ceramic or Plastic Case (Depending on model)

- Conductive Bimetal Element
- Die Stamp Designates Thermostatic Metal Type

All models in this series are normally in the closed position allowing electricity to flow through the circuit. When the temperature exceeds a preset high limit, the bimetal element opens to break the circuit. Single operation devices cannot be reset.

Feature	Benefit
Ceramic case	Isolates devices from the electrical circuit. Suitable for high temperature applications. Can be mounted directly to heated surface.
Single Operation	With the reset temperature set below -35°C the device will not reset under normal conditions, but can be factory-tested to ensure reliability.
Unique positioning of bimetallic element	Allows for excellent heat transfer for improved reaction time. H-3, H-4, H-5, H-7 and H-8 models can have exposed elements for even faster reaction times.
Snap action precision high level limiting control.	Quick break switching action offers
Different models are available with same or opposite end terminations	Additional mounting choices to fit particular applications.
100% factory testing	Ensures performance reliability.
Preset calibration temperatures	Maximizes accuracy. Calibration cannot be reset in field.
Factory installed lead wires or terminals	Simplifies installation. Please contact us for available options.

*We come through when the heat is on®*



**Pepi®**

Portage Electric Products, Inc.

# MODEL H SERIES

## Customization Options

## Effect

Lead wire configurations

Match application needs without increasing costs.

Select calibration temperature

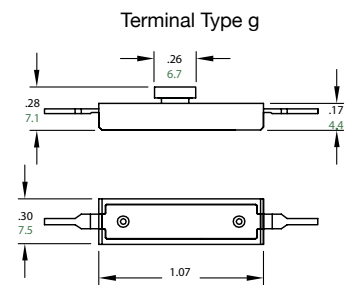
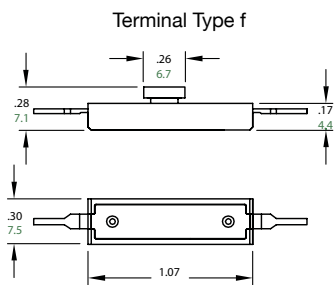
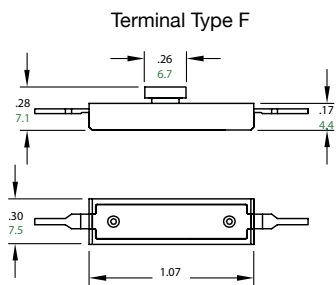
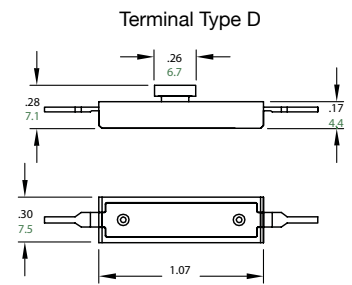
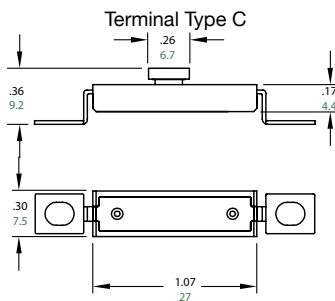
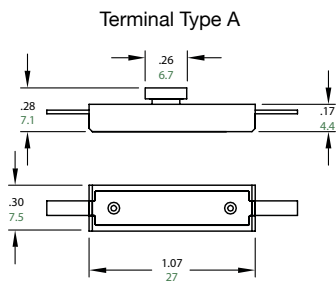
Match application needs.

**Applications:** Almost anywhere ultimate safety is required. Included are laser printers, curling irons, copiers and many small appliance.

## UL Recognitions

(Visit [www.pepiusa.info/ul-recognitions](http://www.pepiusa.info/ul-recognitions) for full details)

**File: E37151 - Temperature Indicating and Regulating Equipment**



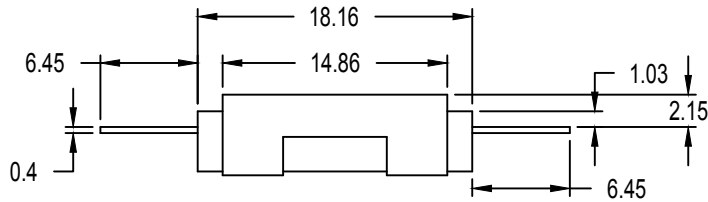
# MODEL H SERIES

## MODEL H AND H-1

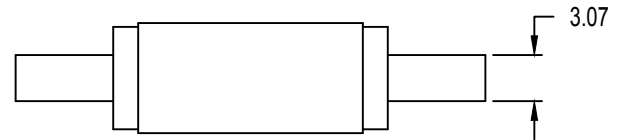


High-Limit device for DC applications

Side View



Top View



### Contact Ratings

Model H: 1AMP/36V DC (resistive)  
Model H-1: 10AMPS/250V AC (resistive)

### Calibration Temperature Range

Nominal Calibration Temperatures Model H: 160°C - 220°C  
Model H-1: 160°C - 240°C

### Terminators Listing

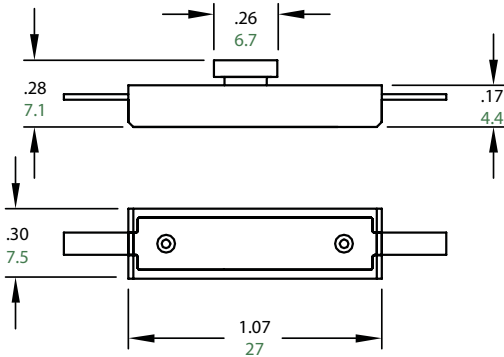
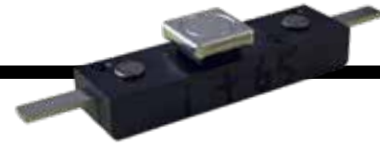
Terminal Types: f, g

*\*Please consult our Sales Engineers for suggested contact ratings when applied to DC type loads*

# MODEL H SERIES

## MODELS H-3, H-4, H-5

Also available with exposed bimetal element to speed reaction times on loads up to 10 AMPS 250 VAC



METRIC DIMENSIONS ARE IN MM (SHOWN IN GREEN)

### Termination Types

Terminal Types: A, C, D, F

### Contact Ratings

H-3	10 AMPS / 250 VDC (resistive) 2 AMPS / 250 VDC (resistive)
H-4	0.5 AMPS / 50 VDC (resistive)
H-5	15 AMPS / 125 VAC (resistive) 10 AMPS / 250 VAC (resistive)

### Calibration Temperature Range

Nominal Calibration Temperatures

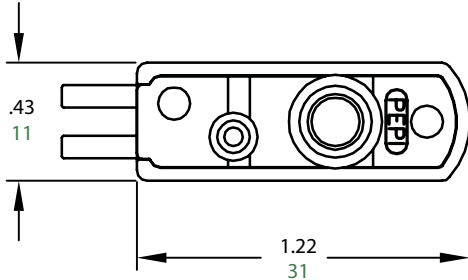
H-3	130°C - 260°C
H-4	130°C - 260°C
H-5	130°C - 260°C



# MODEL H SERIES

## MODEL H-7

Also available with exposed bimetal element that improves reaction time in applications up to 280°C.



METRIC DIMENSIONS ARE IN MM (SHOWN IN GREEN)



### Termination Listings

Terminal Types: A only

### Contact Ratings

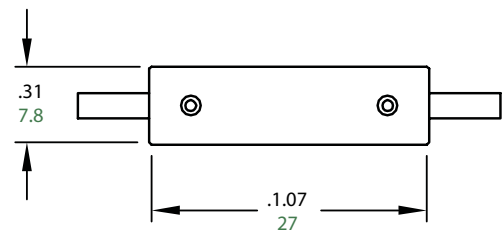
15 AMPS / 250 VAC (resistive)

### Calibration Temperature Range

Nominal Calibration Temperatures 160°C - 280°C

## MODEL H-8

Also available with exposed bimetal element that improves reaction time in applications up to 280°C.



METRIC DIMENSIONS ARE IN MM (SHOWN IN GREEN)



### Termination Listings

Terminal Types A, C, D, F

### Contact Ratings

15 AMPS / 250 VAC (resistive)

### Calibration Temperature Range

Nominal Calibration Temperatures 160°C - 280°C

# MODEL H SERIES

## MODEL H-9



METRIC DIMENSIONS ARE IN MM (SHOWN IN GREEN)

### Termination Listings

Termination Types: A, D

### Contact Ratings

15 AMPS / 250 VAC (resistive)

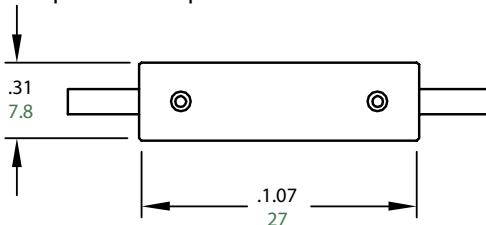
### Calibration Temperature Range

Nominal Calibration Temperatures 130°C - 260°C

## MODEL H-10



Exposed bimetal element speeds reaction times on DC loads up to 50 VDC and temperatures up to 260°C.



METRIC DIMENSIONS ARE IN MM (SHOWN IN GREEN)  
DIMENSIONS ARE SAME FOR ALL TERMINAL CONFIGURATIONS

### Termination Listings

Terminal Types: A, D

### Contact Ratings

1 AMPS / 50 VDC (resistive)

### Calibration Temperature Range

Nominal Calibration Temperatures 130°C - 260°C

## Portage Electric Products, Inc. (PEPI) The Thermal Control Specialists

This sheet contains basic technical and operating characteristic data for our Model H Series Thermal Controls.

Should you have any questions regarding the use of this device in your application, please feel free to contact us for additional technical information or assistance.

Since 1963 PEPI has been world-wide supplier of bimetallic thermostats and thermal protectors. Today, we produce almost every type of creep-action and snap-action device used in a wide range of OEM applications