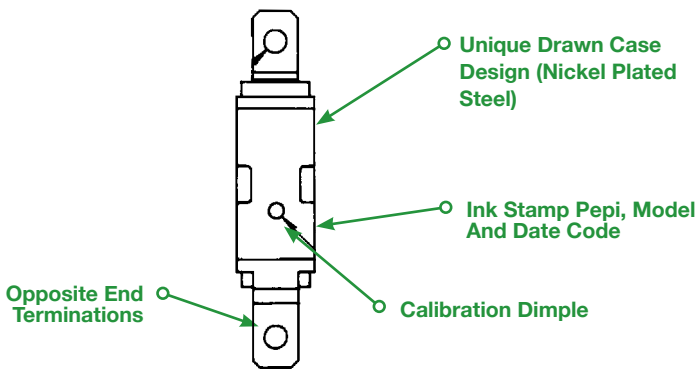
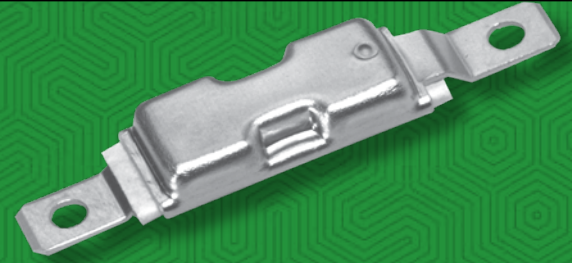




Designed to offer versatile mounting options to low-current 120 VAC applications.

# MODEL E

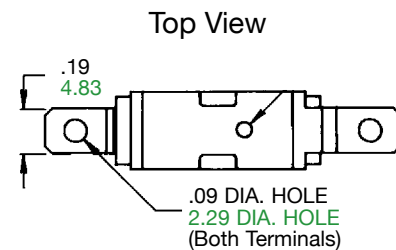
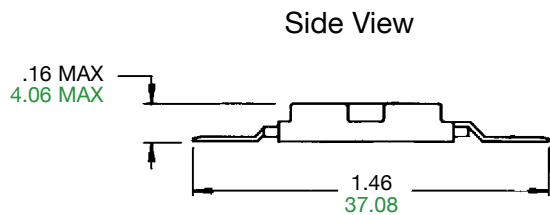
The PEPI® Model E creep action thermostat features opposite end terminations to simplify inline mounting options. The low profile design also allows it to fit in tight spaces making it especially suitable for heating pads, electric blankets and other heated applications where circuits need to remain as thin and simple as possible. Oversized, gold-diffused contacts make the PEPI® Model E a high-reliability choice for many low current applications.



▪ Customer Specified Lead Length And Insulating Material

**Model E** units are normally in the closed position allowing electricity to flow through the circuit. When the temperature exceeds a preset high limit, the bimetal element opens to break the circuit. As temperatures cool, the bimetal element eases back to its original shape, closing the circuit.

Feature	Benefit
Drawn case has low profile	Fits neatly in tight spaces.
Case electrically live	Dissipates heat so that bimetallic element only reacts to changes in circuit load.
Conductive bimetal construction	Bimetallic element carries the circuit current.
Creep action	Slow make / slow break switching action maintains narrow differential between opening and closing temperatures.
Over-sized gold plated contacts	Maximizes current sensitivity and performance reliability.
Preset calibration temperatures	Maximizes accuracy. Calibration cannot be reset in field.



METRIC DIMENSIONS ARE IN MM (SHOWN IN GREEN)

*We come through when the heat is on®*

# MODEL E

Customization Options	Effect
Change bimetallic elements	Increase or decrease sensitivity to current.
Add lead wires	Speed production at your facility. Choose wire and insulation material best suited to your application.
Select calibration temperature	Match application needs.
Add sleeves to case	Protect device from environmental concerns or severe ambient temperatures that might influence operation.

## UL Recognitions (Visit [www.pepiusa.info/ul-recognitions](http://www.pepiusa.info/ul-recognitions) for full details)

### File: E37151 - Temperature Indicating and Regulating Equipment

- Temperature Limiting or Limiting and Regulating Equipment
- Thermal Protector For Use in Electric Heating Pads
- Thermal Protector For Use in Incandescent Lamps

## CSA Certifications (Visit [www.pepiusa.info/csa-certifications](http://www.pepiusa.info/csa-certifications) for full details)

### Class: 4823 02 Appliance Controls

Has been evaluated by CSA for use in heating pad applications.

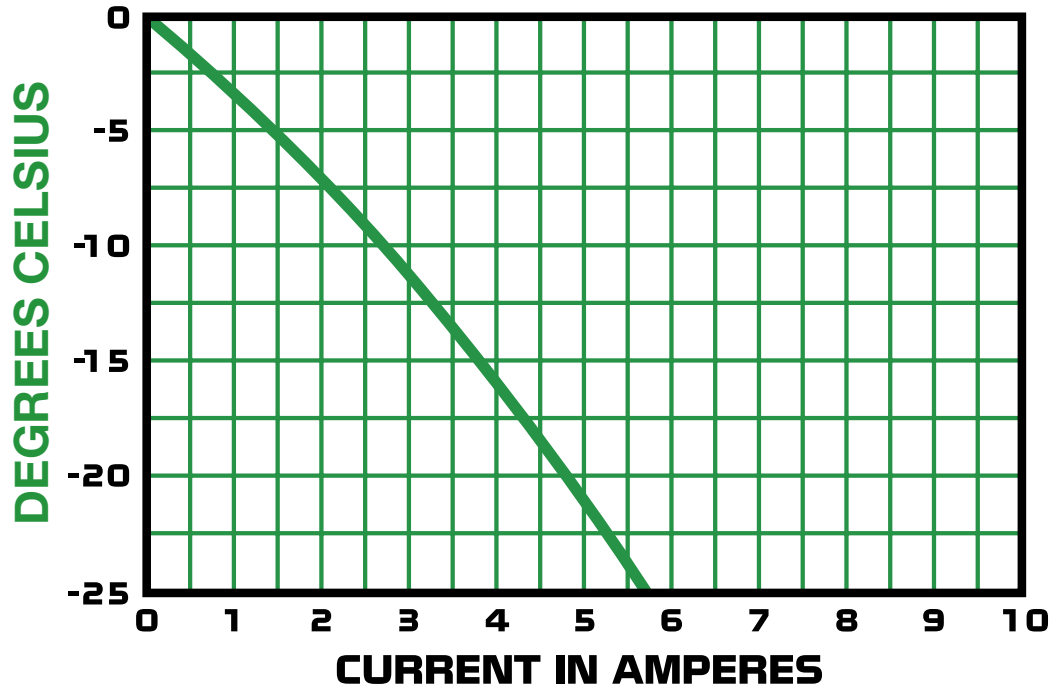
Contact Ratings	Calibration Temperature Range	
2 amps / 125 VAC (resistive)	Nominal Calibration Temperatures	30°C - 90°C
	Reset temperature	Typically 1°-3°C lower than opening temperature

*\*Please consult our Sales Engineers for suggested contact ratings when applied to DC type loads*

# MODEL E

PEPI® MODEL E REAL WORLD PERFORMANCE

## MODEL E DERATING CURVE



These are only representative curves based on controlled laboratory testing. Results may vary in actual applications.

## Portage Electric Products, Inc. (PEPI) The Thermal Control Specialists

This sheet contains basic technical and operating characteristic data for our Model E Thermal Controls.

Should you have any questions regarding the use of this device in your application, please feel free to contact us for additional technical information or assistance.

Since 1963 PEPI has been world-wide supplier of bimetallic thermostats and thermal protectors. Today, we produce almost every type of creep-action and snap-action device used in a wide range of OEM applications.

